



PHUMZILE ENGINEERING SERVICES AND SUPPLIES

# COMPANY PROFILE

[www.phumzile.co.za](http://www.phumzile.co.za)

# TABLE OF CONTENT

- 3. Who We Are
- 4. Business Offereing
- 5. General Engineering
- 6. Engineering Work Done
- 7. Mechanical Supplies
- 8. Experience
- 9. Plant Hire and Earthmoving
- 10. Industrial Supplies
- 11. Ownership
- 12. Gallery
- 13. Affiliates & Clients
- 14. Company Data

# WHO ARE WE

Phumzile Engineering Services and Supplies is a 100 % black woman owned and managed business based in Polokwane that focuses on General Engineering Services, Earthmoving Equipment and Industrial Supplies. We are an authorized dealer for SEM (A Caterpillar brand) Equipment.

# OUR MISSION

To build a business that will be a force to be reckoned within engineering and earthmoving equipment industries.

We achieve this by rendering services and offering products to the industries that utilize heavy machinery and earthmoving equipment, in addition to availing our own equipment for purposes of moving earth. These industries include mining, forestry, construction, agriculture, manufacturing and logistics.



# OUR BUSINESS OFFERING

Our business is divided into four mutually complimentary departments, namely:



**SEM (A Caterpillar brand)  
Dealership in Limpopo**



**General Engineering**



**Industrial Supplies**



**Plant Hire**



**Mechanical Repairs**

These departments complement one another in that they either share customers or are part of the same value chain.



# GENERAL ENGINEERING

## The general engineering operation entails:

- Tooling
- Manufacture of new spares (shafts, bushes etc.)
- Profile cutting
- Sheet metalwork
- Line boring
- Manufacture, repair and maintenance of gantries, overhead cranes and loading bases
- Repair and refurbishment of grader moldboards, excavator and TLB buckets
- Repair and refurbishment of slashers, slasher gearboxes, walk-behind roller, and generators.
- Plant repair and maintenance (plant shut down)
- Boiler making
- Hydraulics
- Thread cutting
- Conveyor belt repair and maintenance

Our clientele for general engineering includes saw mills, brick manufacturing companies, mines, construction companies, farmers, local and provincial government departments and smelters and automotive and beverage industry.



# GENERAL ENGINEERING



**Chimney Fabricated  
for SAFCOL  
Timbadola Plant**



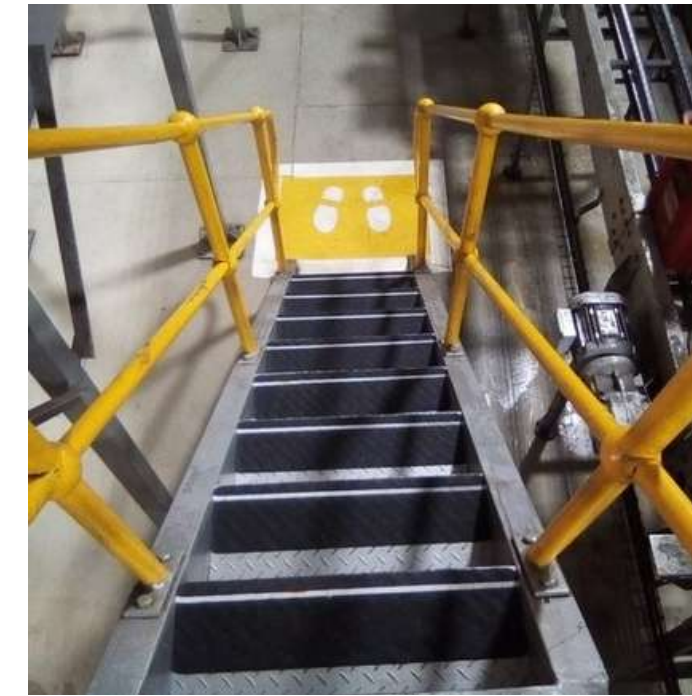
**Engineering jobs  
completed**



**Skip bin repairs for  
ABInBev (SAB)  
Polokwane Plant**



**Slasher repairs for  
Polokwane  
Municipality**



**Staircase fabrication  
at CCBSA Polokwane  
Plant**



# MECHANICAL REPAIRS

Our Mechanical division focuses on repair, maintenance and servicing of earthmoving equipment and commercial vehicles. The repairs can be done at our workshop in Polokwane or on site, depending on customer preference, the nature of work to be done, and the type of equipment. Our capability includes normal service according to original equipment manufacturers' schedule, engine and transmission rebuilds, full refurbishment, repair and refurbishment of ground engaging tools and implements, and hydraulics.

Our major customers for earthmoving equipment include:

- Provincial Government Departments
- Local Municipalities
- Fleet Operators
- Construction companies
- Plant Hire companies

We are also a registered merchant for ABSA Fleet Management Solutions and Wesbank

# EXPERIENCE

We recently refurbished CAT 140H, CAT 140G, CAT 120G and XCMG graders for Limpopo Department of Public Works, Roads and Infrastructure.



# EARTHMOVING EQUIPMENT

We are an authorized dealer for SEM Equipment (a Caterpillar brand).

We supply earthmoving equipment to customers, either for ownership or short-term use. We offer earthmoving equipment for long-term or short-term hiring purposes. Our target market includes:

- Municipalities
- Provincial government departments
- Farmers
- Construction companies

Over the past few years, we've supplied various equipment to multiple municipalities, provincial departments and private companies all over South Africa.



# PLANT HIRE

We supply earthmoving equipment to customers, either for ownership or short term use. We offer earthmoving equipment for long-term or short-term hiring purposes.

Our Main Clients:

- Government Departments
- Municipalities
- Farmers

# VALUES

## Timely Services

In today's fast-paced business environment, project delays can be crippling. Phumzile Engineering prioritizes timeliness as a core value. We understand the importance of adhering to agreed-upon schedules and minimizing downtime.

## Excellent Workmanship

At Phumzile Engineering, we are dedicated to exceeding client expectations. Every project we undertake benefits from our team's commitment to meticulous workmanship. We employ highly skilled and certified professionals who utilize the latest tools and techniques to ensure exceptional results.

## Reliable Supplies

Phumzile prioritizes establishing strong relationships with leading equipment manufacturers and parts suppliers. Furthermore, as an authorized SEM dealer, we offer access to a vast inventory of high-quality equipment, readily available to meet your specific needs.



# INDUSTRIAL SUPPLIES

The industrial supply business offers spares, consumables, tools and materials used in the industries that we serve. Our core supplies are:

- Donaldson Filters – full range of Donaldson filtration technology
- Spares and parts for earth moving equipment, trucks and other commercial vehicles
- Friction spares – wet and dry brake systems
- Industrial consumables (rags, hand cleaners, detergents)
- Earth engaging tools (e.g. grader blades, bucket teeth)
- Lubricants and related chemicals (degreasers, anti-freeze/coolants, disinfectants, etc.)
- Abrasives
- Bolts and Nuts

We are targeting clients that you use the other services within our business.



# OWNERSHIP AND MANAGEMENT OF THE BUSINESS

The sole shareholder and director of the company is Martie Phumzile Mphelo. As such the company is 100% black woman managed and owned.

Martie holds an MBA from University of Limpopo and an MSc from the University of the Western Cape. She worked as a Research Scientist at the Agricultural Research Council (ARC) for two years, and then moved on to work as Software Quality Assurance Tester for Electric Genetics for two years. Upon leaving Electric Genetics, she joined Pfizer Consumer Healthcare Research and Development division as a Development Analytical Chemist for three years, where she was responsible for Environmental Health and Safety aspects of the laboratory. She was also involved in training junior employees on various laboratory related instrumentation, policies and procedures. After leaving Pfizer, Martie started developing SAQA-based learning material for Anglo Platinum, and for Top Performers for Africa.

The learning material for developed for Anglo Platinum, is used at to train employees in their laboratories across the country. In addition to learning material, she facilitated training for Anglo Platinum representing Top Performers for Africa.

Martie is assisted by Carstens Mphelo in the management of the business. Carstens holds B. Proc from University of Limpopo, LL B from Wits University and MBA from University of Cape Town. He is an attorney and notary public and practiced for many years with Webber Wetzel Bowens Attorneys in Johannesburg, and also with Milbank Tweed Hadley and McCloy of New York, USA. Upon leaving legal practice, he joined Consani Engineering as a Commercial Manager where he gained experience in strategy formulation, project management and implementation and manufacturing in mechanical engineering industry.

At Consani Carstens was head of Human Resources Department, responsible for up to 1400 employees in unionised environment in an engineering manufacturing environment. Carstens served in senior positions within large corporates, and was until recently executive director and Chief Operating Officer of Metropolitan Asset Managers Limited, and investment management company that had R55 billion of assets under management at the time of his departure.



# GALLERY

WE KEEP EARTH MOVING EQUIPMENT MOVING



# AFFILIATES & CLIENTS

## OUR AFFILIATIONS

SEM (A Caterpillar brand) Dealer  
WesBank Fleet Management and Leasing  
ABSA Vehicle Management Solutions  
Minatlou-Future Fleet Solutions

## ACCREDITATIONS

RMI certified

## CUSTOMERS

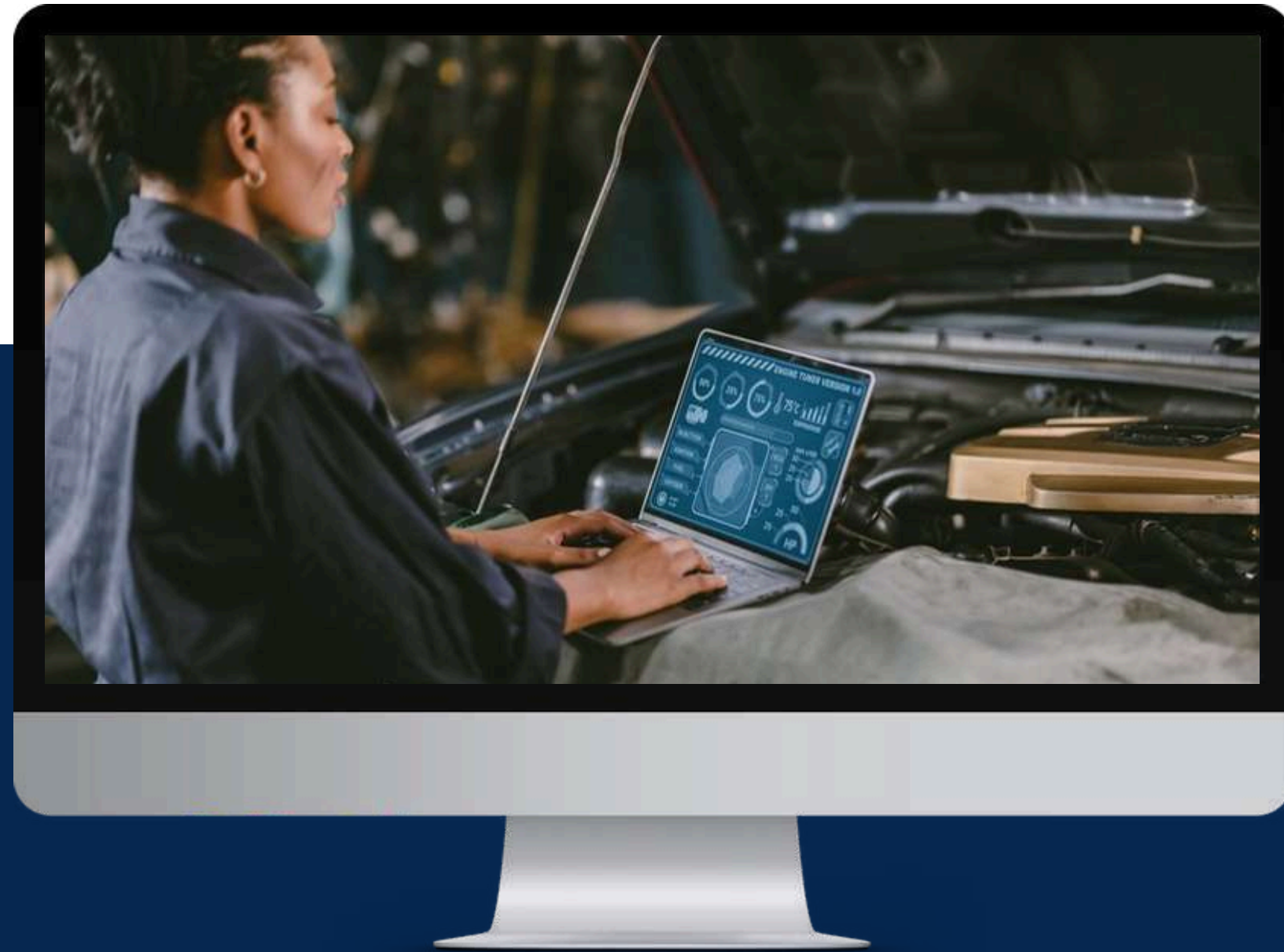
Limpopo Department of Public Works, Roads and Infrastructure  
Limpopo Department of Transport  
Limpopo Department of Health  
Limpopo Department of Social Development  
Department of Justice  
Department of Water and Sanitation  
Limpopo Department of Correctional Services  
SAFCOL  
Coca Cola

Polokwane Local Municipality  
Free State Department of Public Works  
Nkomaazi Local Municipality  
Lepelle-Nkumpi Local Municipality  
Ntabankulu Local Municipality  
Midvaal Local Municipality  
SAKKOR  
Barloworld Equipment  
Maruma Plant Hire



# ESSENTIAL COMPANY DATA

<b>Registered Company Name:</b>	Phumzile Mphelo Services and Supplies (Pty) Ltd
<b>Office Numbers: Contact: Fax Numbers: Email Address:</b>	015 004 0078 or 015 880 2101 Martie Mphelo 082 334 9702 086 274 2563 martie@phumzile.co.za
<b>Company Registration Number:</b>	2006/039231/07 MAAA0049969 2777-358-2200
<b>CSD Registration Number: COID Registration Number: Income Tax Reference Number: Vat Reference Number: Business Address: Postal Address:</b>	9524876159 4570267866 47 Lood Street, Futura, Ladanna, Polokwane P O Box 12081, Bendor Park, 0713 Martie Phumzile Mphelo (100%) Standard Bank , Absa Bank
<b>Director and Shareholder:</b>	
<b>Bankers:</b>	



# CONTACT US



015 880 2101 / 082 334 9702



[www.phumzile.co.za](http://www.phumzile.co.za)



[info@phumzile.co.za](mailto:info@phumzile.co.za)



47 Lood Street, Ladanna, Futura, Polokwane